

Separating Trash in Yonezawa

◆Rules for Garbage Disposal◆

- Please take out the garbage by 7:30am on the specified collection day.
- Make sure to check the garbage collection calendar before putting the trash out. Please don't put the trash out on days other than the specified collection days.
- Please neatly separate the garbage before throwing it out.
- Make sure to put garbage in the specified garbage bags.
- Please only put your garbage in the dumpster or collection site specified by your neighborhood association or apartment keeper. Do not throw out garbage in other locations

Mark on Calendar	Garbage Type	Type of Garbage Bag, type of Garbage
可燃	Burnable Garbage	【Bag】 Specified bag (white with red writing) 【Garbage type】 Items that can be incinerated. See page 2 for details.
不燃	Non-Burnable Garbage	【Bag】 Specified bag (clear with green writing) 【Garbage type】 Items that can be disposed of in a garbage grinder. See page 3 for details.
プラ	Plastic Containers & Wrappings	【Bag】 Specified bag (clear with orange writing) 【Garbage type】 Plastic packaging, plastic wrappers, etc. See page 4 for details.
ペット	PET Bottles	【Bag】 Specified bag (clear with orange writing) 【Garbage type】 Drink,/alcohol/soy sauce bottles, etc. (Plastic bottles) See page 5 for details.
有害	Hazardous Garbage	【Bag】 Depends on the type of trash. See page 6. 【Garbage type】 Items with mercury or other harmful substances, anything that is ignition. See page 6 for details.
資源	Recyclables	【Bag】 Depends on the type of trash. See page 7,8. 【Garbage type】 Old papers, old clothes, cans, bottles, spray can, Gas canisters See page 7,8 for details.
	Days that you can take trash to the Chiyoda Clean Center (non-weekdays)	
None	Oversized Garbage	Do not put in dumpster. See page 9 for details.
None	Computers	Do not put in dumpster. See page 10 for details.
None	TVs etc.	Tvs, refrigerators, washing machines, and AC units must be special ly recycled and cannot be accepted at the dumpster. See page 10 for details.

Burnable Garbage

【Type of Garbage】

Food scraps, paper scraps, diapers, fabric scraps, cloth items, undergarments, socks, cushions, rain ponchos, plastic cooking oil containers

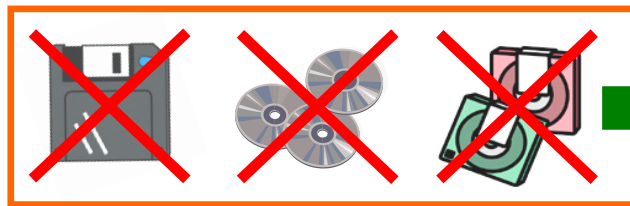


Leather items (bags, backpacks, etc.), Footwear (boots, shoes, slippers, etc.), Rubber items



Video tapes, cassette tape

※CDs, DVDs, floppy disks, and other magnetic disks should go in non-burnable garbage.



Non-burnable Garbage

【How to disposal】

Place in designated trash bag and take out on the days marked with 「可燃」 on the trash calendar.

<p>Specified</p> <p>【Large】 Red Lettering 550 yen</p> <p>【Small】 Red Lettering 370 yen (10 bags)</p>	An illustration of a white designated burnable garbage bag with red text and a red logo. The text on the bag includes '指定可燃ごみ袋 (もやせるもの)'.
---	---

Non-Burnable Garbage

【Type of garbage】

Metal items, metal bottle caps, pots、 frying pans, cutlery (knives, etc) , wire items,dishes



Small electronics (irons, hair dryers, water pots, rice cookers)

※ Items that do not fit in a trash bag (fans、 microwaves, etc.) should be treated as oversized trash.

※ Laptops cannot be put out as non-burnable garbage. See page 10 for more information.




Hard plastics items (hangers、 buckets、 planters、 pens, etc.), floppy disks, MDs, CDs, DVDs,Umbrellas (foldable ones small enough to fit in the trash bag), glass items (make sure to wrap broken glass in newspaper before throwing it out)



【How to dispose】

Put in designated garbage bags, and throw away on days marked 「不燃」 (Funen/Non-Burnable) on the household garbage calendar.

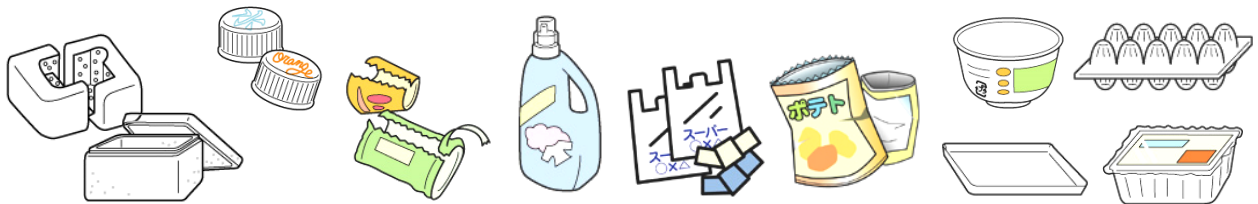
Specified	
【Large】	
Green Lettering 550 yen	
【Small】	
Green Lettering 370 yen	
(10 bags)	

Plastic Containers and Wrappings

【Type of garbage】

Styrene foam and other packing materials, caps and labels from plastic bottles, detergent bottles, etc., plastic bags, food trays and packaging

※Empty mayonnaise, cooking oil, and other bottles that are hard to clean should go in burnable garbage.



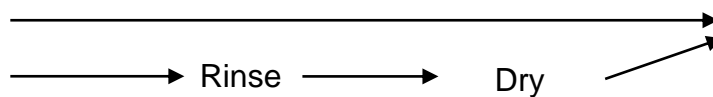
Items with this symbol are considered plastic garbage.

【How to dispose】

Place in designated trash bag and take out on the days marked with 「プラ」 on the trash calendar.

[Clean]

[Not Clean]



Put in designated garbage bags

Please Wash them!!



※ Make sure to put plastics and PET bottles in two separate bags.

Specified

【Large】

Orange Lettering 400 yen

【Small】

Orange Lettering 250 yen

(10 bags)



PET (Plastic) Bottles

【Type of garbage】

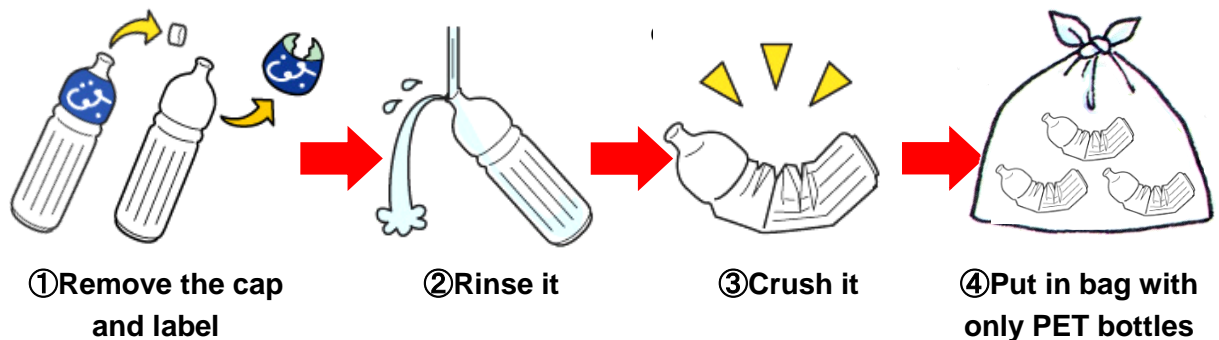
Plastic bottles used for beverages, alcohol (including mirin), and soy sauce.



Items with this symbol are considered PET bottles.

【How to dispose】

Place in designated trash bag and take out on the days marked with 「ペット」 on the trash calendar.



※ Make sure not mix with plastic garbage mentioned on page 5.

Specified

- 【Large】
Orange Lettering 400 yen
- 【Small】
Orange Lettering 250 yen
(10 bags)



Hazardous Garbage

【Type of garbage】

Fluorescent lights, batteries, watch batteries, mercury thermometers, lighters, rechargeable batteries, pocket chargers, cell phones, electronic cigarettes, electric toothbrushes, electronic shavers



【How to dispose】

Place in designated trash bag and take out on the days marked with 「有害」 on the trash calendar.

Fluorescent lights	Batteries, Watch batteries	Mercury thermometers, Lighter	Rechargeable batteries, etc
Put in the same box that it came in.	Put in a clear plastic bag. Make sure to separate single-use batteries from rechargeable ones.	Put in a clear plastic bag.	Put in a clear plastic bag. Rechargeable batteries and mobile chargers can go in the same bag.

Recyclable Garbage

【Type of garbage】

Old newspaper/magazines, old clothes, glass bottles, cans, spray cans, gas canisters



【How to dispose】

Take out on the days marked with 「資源」 on the trash calendar.

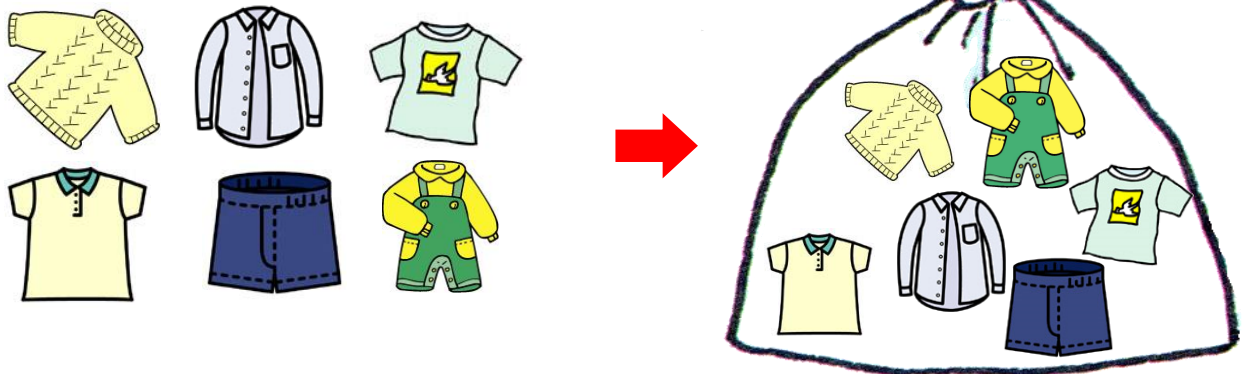
Paper items

Separate into 4 categories below, and tie together using string.

<p>① Newspapers/Flyers</p>	<p>② Cardboard Boxes</p>
<p>③ Milk Cartons, other drink boxes</p>	<p>④ Miscellaneous Papers (magazines, books, boxes, etc.)</p>

Fabric items

Place inside of a clear bag.



Recyclable Garbage (cont'd)

【How to dispose】

Put out on the days marked with 「資源」 on the trash calendar.

Cans

Put into a clear plastic bag.

※ Aluminum/steel food and drink cans only.



Symbol for Recyclable



Can:



① Lightly rinse

② Put into a clear bag

Glass bottles

Put into a clear plastic bag.

※ Make sure to remove the cap.

※ Glass makeup bottles/bottles that contained oil should go out with non-burnable garbage.

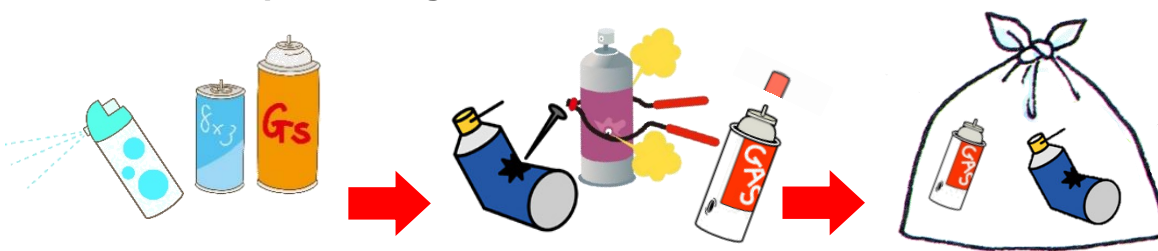


① Lightly rinse

② Put into a clear bag

Spray can, gas canisters

Put into a clear plastic bag.



① Make sure it is completely empty

② Punch a hole in it to let any remaining product out. Remove the cap (caps should go in with non-burnable or plastic garbage)

③ Put into a clear bag

Oversized Garbage

【Type of garbage】

Items over 50cm in length or over 5kg in weight (or any items that do not fit in the specified bag)



Kerosene heaters are considered oversized garbage regardless of size.

【How to dispose】

- ① Call the oversized garbage collection center to make a reservation for collection and find out the processing fee. The processing fee will be 300 yen, 600 yen, 900 yen, 1,200 yen, or 1,500 yen, depending on the size and type of item

Oversized Garbage Collection Center
Phone number: 0238-22-5235 Hours: Mon-Fri 9am~4pm

- ② Buy **oversized garbage stickers** that correspond to the processing fee.

Oversized garbage stickers can be purchased at supermarkets, hardware stores, and convenience stores in the city.

1 sticker=300 yen

Processing Fee

600 yen → 2 Stickers

900 yen → 3 Stickers

1,200 yen → 4 Stickers

1,500 yen → 5 Stickers

【Oversized Garbage Sticker】



- ③ Put the **oversized garbage sticker(s)** on the item(s), and put them out on the agreed upon collection day.

Recyclable Appliances (5 Items)

【Type of garbage】



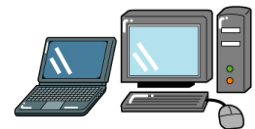
【How to dispose】

If you are buying a new one in exchange	Contact store.	
If you want to dispose of it	If you can transport it	Buy a recycle ticket at the post office, and take the item to the designated recycling location. [Recycling location] Harako Shoten (3448-1 Hanazawa, Yonezawa)
	If you cannot	Buy a recycle ticket at the post office, and request pickup from one of the waste collection companies on page 11. (fees apply)

【Recycling Ticket Fee】

Item	Television	Refrigerators/Freezers	Washer/Dryer	AC unit
Fee	Under 15 in.= from 1,320 yen Over 15 in.= from 2,420yen	Under 170 liters = from 3,740 yen Over 170 liters = from 4,730 yen~	From 2,520 yen	From 990 yen

PCs (Laptop and Desktop)

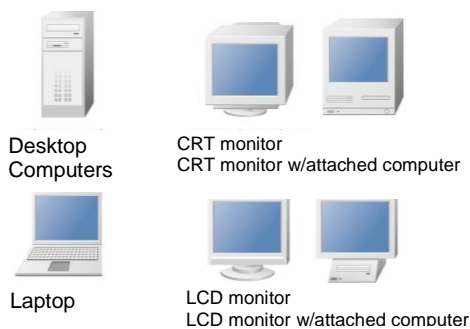


Computer companies will recycle your old household PCs.

To request collection, please contact the computer's manufacturer.

※Computers cannot be collected by municipalities or retailers.

Devices that can be collected:



- Items attached when the device was purchased (mouse, keyboards, speakers, cables) can also be collected together.
- Printers, scanners, word processors, PDAs, work stations/servers, video game consoles, user manuals, and CD-ROMs cannot be collected.

Collection/Recycling fees (Tax Ind.)

Item	Fee
Desktop Computer (body)	3,240 yen each
Laptop	
LCD monitor	
LCD Monitor w/attached computer	4,320 yen each
CRT monitor	
CRT Monitor w/attached computer	

※ Fees may change depending on the computer manufacturer.

For Details: **Contact the PC3R Promotion Association**

<http://www.pc3r.jp/e/index.html> (English Page) TEL: 03-5282-7685 FAX: 03-3233-6091

Self-Delivery

You can also bring your garbage directly to the Chiyoda Clean Center yourself.

【Hours】

Monday-Friday AM: 9am-12pm
PM: 1pm-4pm

※Closed on Saturdays, Sundays, public holidays, and New Year holidays.

However, it is open 2 Saturdays during the year (check trash calendar)

【Processing fees】

◎Trash 180 yen per 10kg ◎Deceased dogs/cats 2,000 yen per body

【Address/Contact Info】

Chiyoda Clean Center (2933 Oaza Natsumo, Takahata) TEL 0238-57-4004

Other Garbage

Contact the following companies if you have large amounts of garbage from moving, large items, or garbage from stores or restaurants. (fees apply)

General Waste Collection Company

Yonezawa Seiso	TEL 22-6440	Kato Eisei Kigyo	TEL 28-1253
Kanazawa Seiso	TEL 23-0965	Watanabe Shoten	TEL 23-0670
Chuo Seiso	TEL 22-6100	Goto Clean Shokai	TEL 38-2160
Bunka Seiso	TEL 28-1399	Harako Shoten	TEL 21-3751
Kosei-sha	TEL 23-8105	Shiguma	TEL 37-6133
Shiodani Butsuryu	TEL 23-1415	Yonezawa Kankyo Jigyo	TEL 26-4551

For human waste collection and disposal, please contact one of the companies below.

Yonezawa Seiso	TEL 22-6440	Bunka Seiso	TEL 28-1399
Kanazawa Seiso	TEL 23-0965	Kosei-sha	TEL 23-8105
Chuo Seiso	TEL 22-6100	Yonezawa Kankyo Jigyo	TEL 26-4551

Questions Regarding Garbage Disposal

Yonezawa City Environmental Living Division Waste Provision Desk
TEL 0238-22-5111

For Other Inquiries

Please contact the **Y**onezawa city **I**nternational **R**elations **A**ssociation (YIRA) for any other inquiries regarding garbage sorting, disposal, or other daily life questions.

Yonezawa City International Relations Association (YIRA)

Okitama Culture Center 1F,

3-1-14 Kanaike, Yonezawa City, Yamagata 992-0044

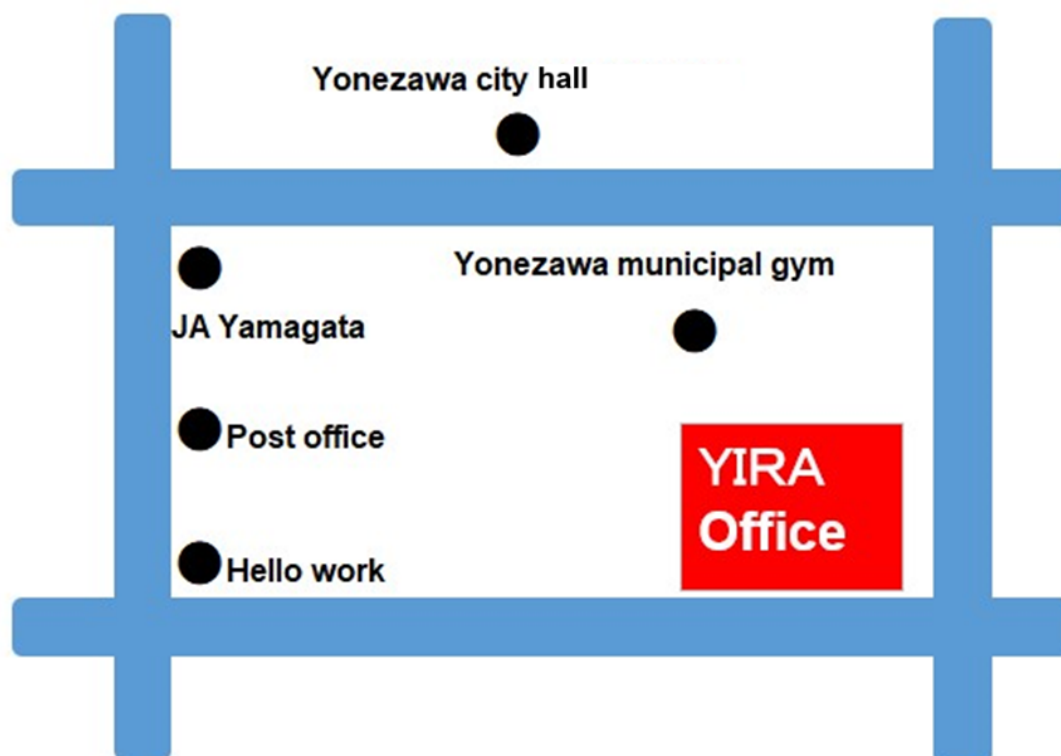
Closed: Sundays Hours:10:00am~5:00pm

TEL: 0238-33-9146 Fax: 0238-33-9147

English/ Chinese Support Line: 090-2849-9145

E-mail: yira@omn.ne.jp

URL: <https://www.yira-yonezawa.org/>



Compiled: Feb 2022